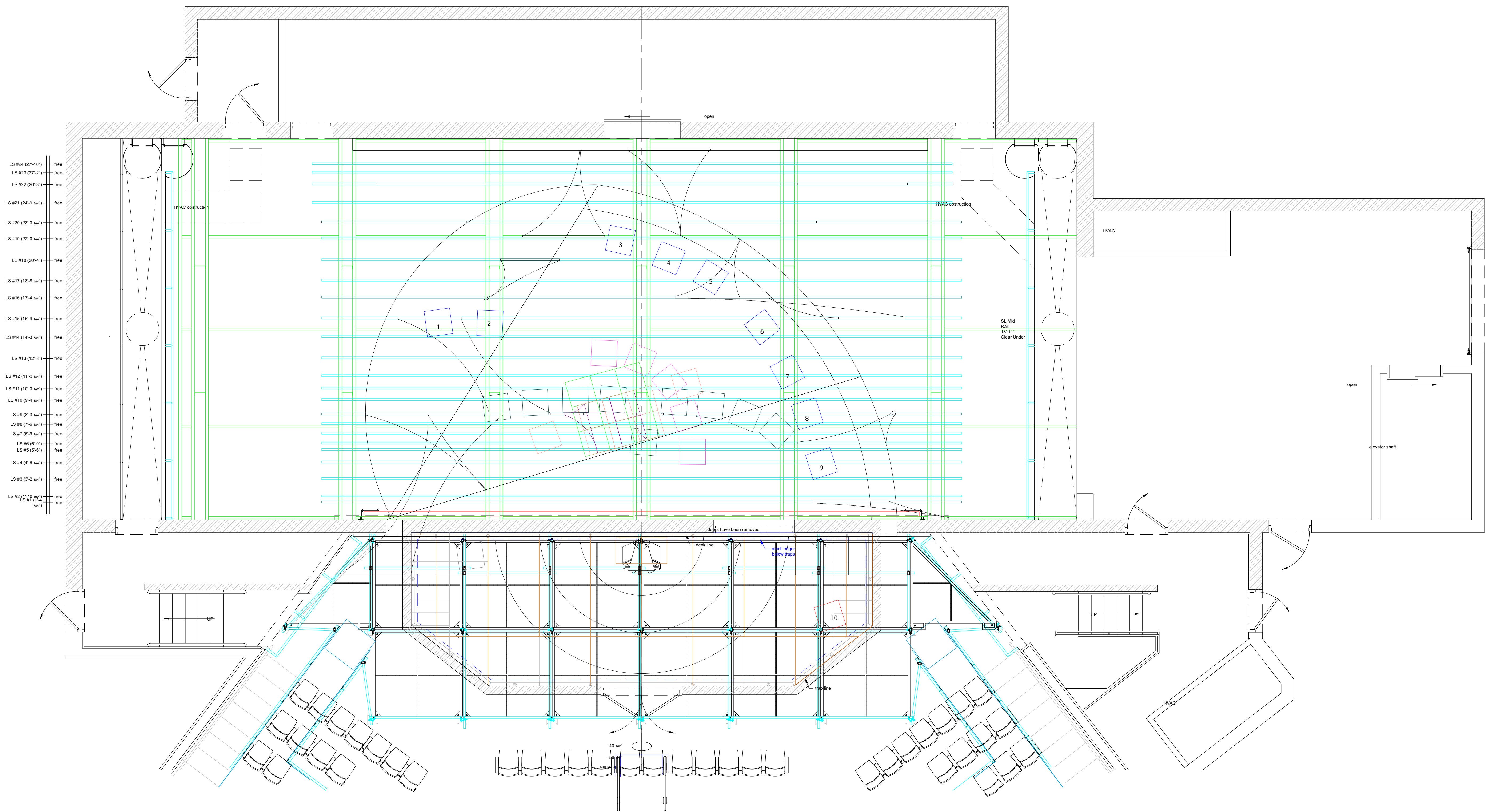


1 Venus Composite Ground Plan



3 Model Box w/ Example of "Home Base" locations



Notes:
- Decks increase by 9 inches for every level
- Fabric Panels are permanent except center one, which drops down and creates the cage
- All 9 boxes onstage create all of scenery
- Box 10 is hiding on stage left wing and comes out for Baron's seat, meant to be near audience

2 Breakdown of Scenery

| Scene: | Locations of Boxes: |
|----------|--|
| Overture | - 9 Pieces are placed in "home base" (locations are numbered 1-9, Blue) |
| 31 | - Home base (Blue) |
| 30 | - Home base (Blue) |
| 29 | - Home base (Blue) |
| 28 | - Panel dropdown center stage (Purple) - 4' x 4' platform - Other 5 upstage in "home base" (Blue) |
| 27 | - Panel goes up - 2 move back, 2 more forward center (Orange) - Others are in "home base" (Blue) |
| 26 | - Back to "home base" (Blue) - Baron's chair appears (Red) |
| 25 | - Home base (Blue) |
| 24 | - Home base (Blue) |
| 23 | - Baron's chair appears (Red) |
| 22 | - Home base (Blue) |
| 21 | - Boxes are brought downstage (Dark Blue) |
| 20 | - Panel dropdown 9 (Purple) - 4' x 4' platform - Other 5 "home base" (Blue) |
| 19 | - Cage away/ boxes back in arch (Blue) - Baron's chair appears (Red) |
| 18 | - Home base (Blue) |
| 17 | - Home base (Blue) |
| 16 | - 2 boxes make the podium (Light Gray) - Others in "home base" (Blue) |
| 15 | - 2 boxes make the podium (Light Gray) - Others in "home base" (Blue) |
| 14 | - 6' x 6' Platform (Green) |
| 13 | - 4' x 4' Platform (Purple) - 2 make podium (Gray) - 3 moved back (Blue) |
| 12 | - 4' x 4' Platform (Purple) - 2 make podium (Gray) - 3 moved back (Blue) - Panel drop down (Purple) |
| 11 | - Panel and platform (Gray/Purple) - Baron's chair appears (Red) |
| 10 | - Panel and platform (Gray/Purple) - Baron's chair appears (Red) |
| 9 | - Table configuration (Light Red) |
| 8 | - Baron's chair appears (Red) |
| 7 | - 6' x 6' Platform (Green) |
| 6 | - 4' x 4' Platform (Purple) - 5 Around (Pink) |
| 5 | - 4' x 4' Platform (Purple) - 5 Around (Pink) |
| 4 | - 6' x 6' Platform (Green) - Baron's chair appears (Red) |
| 3 | - 6' x 6' Platform (Green) - Baron's chair appears (Red) |
| 2 | - 6' x 6' Platform (Green) - Baron's chair appears (Red) |
| 1 | - Home Base |

Scenic Designer:
Abigaile M. Wiker



Company:

PSCS

Production:

Venus

Director:

Scenic Designer:

Abigaile M. Wiker

Technical Director:

Plan:

Composite

Sheet Number:

1

of: 1

Drawn By:

Abigaile M. Wiker

Scale:

1:4

Date:

12/10/16

Revision Date:

Advisor:

Dan Robinson

Notes:

Venue:

The Olney Theatre

Address:

2001 Olney-Sandy Spring Road